

Uncreated God (King of Love)

So we have come to know and to believe the love that God has for us.
God is love, and whoever abides in love abides in God, and God abides in him. (1 John 4:16)

Abe & Liza Philip

VERSES 1,2

♩ = 83

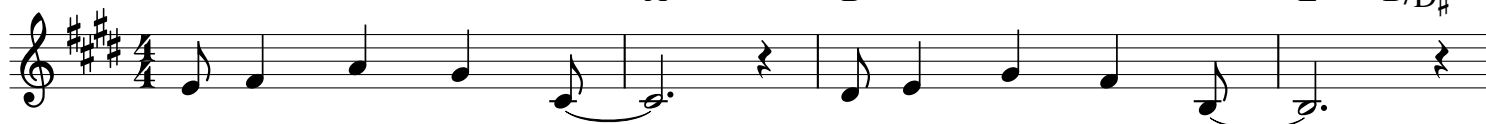
E

A

B

E

B/D#



1. Un - cre - a - ted God, _____

Un - cre - a - ted Love, _____

2. Joy Un - spea - ka - ble, _____

In - ex - pres - si - ble, _____

5

C#m

A

Bsus-

B7

A/E

E A/B



1. Fa - ther, Spi - rit, Son, _____

Ne - ver - en - ding One. _____

2. God Most Won - der - ful, _____

Ne - ver - chan - ging One. _____

9

E

A

B

E

B/D#



1. True and Beau - ti - ful,

Just and Mer - ci - ful, _____

2. Sove-reign Ma - jes - ty,

In vin - ci - ble and Free, _____

13

C#m

A

Bsus-

B7

E

B/D#



1. God Un - sear - cha - ble, _____

Ne - ver - fai - ling One. _____

2. God who died for me, _____

Ev - er - li - ving One. _____

CHORUS

17

C#m

E

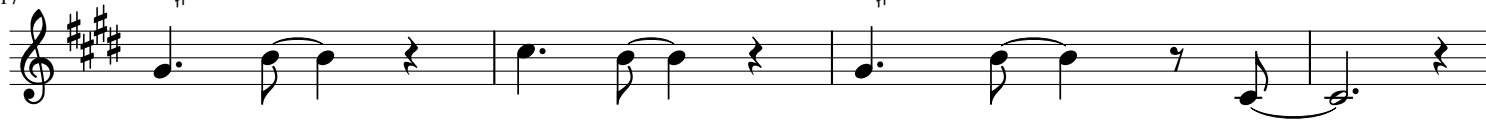
A

E

C#m

E

A



Ho - ly, _____

Ho - ly, _____

Ho - ly _____

God.

21

C#m

E

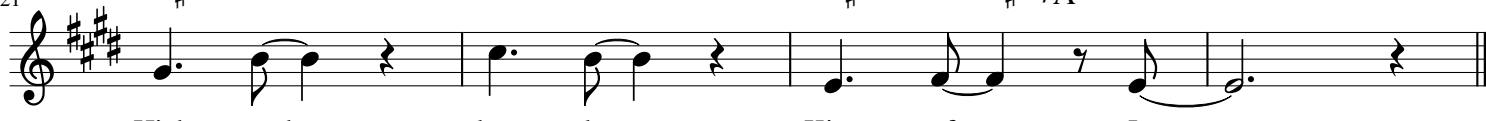
A

E

C#m

F#m/A

E



High and _____

low - ly _____

King of _____

Love. _____

Uncreated God (King of Love)

Abe & Liza Philip

So we have come to know and to believe the love that God has for us.
God is love, and whoever abides in love abides in God, and God abides in him. (1 John 4:16)

VERSES 1,2

♩ = 83

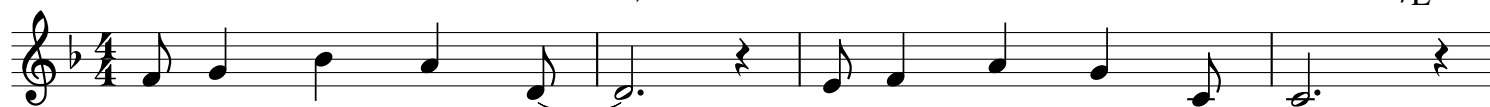
F

B♭

C

F

C/E



1. Un - cre - a - ted God, _____

Un - cre - a - ted Love, _____

2. Joy Un - spea - ka - ble, _____

In - ex - pres - si - ble, _____

5

Dm

B♭

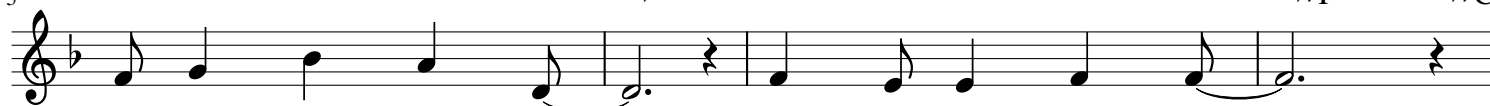
Csus-

C7

B♭/F

F

B♭/C



1. Fa - ther, Spi - rit, Son, _____

Ne - ver - en - ding One, _____

2. God Most Won - der - ful, _____

Ne - ver - chan - ging One, _____

9

F

B♭

C

F

C/E



1. True and Beau - ti - ful, _____

Just and Mer - ci - ful, _____

2. Sove - reign Ma - jes - ty, _____

In vin - ci - ble and Free, _____

13

Dm

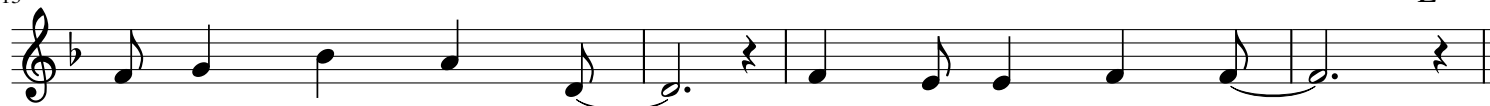
B♭

Csus-

C7

F

C/E



1. God Un - sear - cha - ble, _____

Ne - ver - fai - ling One, _____

2. God who died for me, _____

Ev - er - li - ving One, _____

CHORUS

17

Dm

F

B♭

F

Dm

F

B♭



Ho - ly, _____

Ho - ly, _____

Ho - ly _____

God.

21

Dm

F

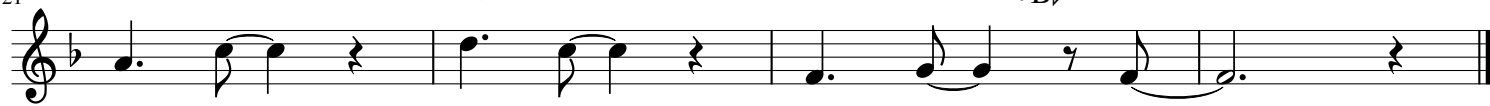
B♭

F

Dm

Gm/B♭

F



High and _____

low - ly _____

King of _____

Love. _____

Uncreated God (King of Love)

Abe & Liza Philip

So we have come to know and to believe the love that God has for us.
God is love, and whoever abides in love abides in God, and God abides in him. (1 John 4:16)

VERSES 1,2

♩ = 83

G C D G D/F#

1. Un - cre - a - ted God,____ Un - cre - a - ted Love,____
2. Joy Un - spea - ka - ble,____ In - ex - pres - si - ble,____

5 Em C Dsus- D7 C/G G C/D

1. Fa - ther, Spi - rit, Son,____ Ne - ver - en - ding One.____
2. God Most Won - der - ful,____ Ne - ver - chan - ging One.____

9 G C D G D/F#

1. True and Beau - ti - ful, Just and Mer - ci - ful,____
2. Sove-reign Ma - jes - ty, In vin - ci - ble and Free,____

13 Em C Dsus- D7 G D/F#

1. God Un - sear - cha - ble,____ Ne - ver - fai - ling One.____
2. God who died for me,____ Ev - er - li - ving One.____

CHORUS

17 Em G C G Em G C

Ho - ly,____ Ho - ly,____ Ho - ly____ God.

21 Em G C G Em Am/C G

High and____ low - ly____ King of____ Love.____

Uncreated God (King of Love)

So we have come to know and to believe the love that God has for us.
God is love, and whoever abides in love abides in God, and God abides in him. (1 John 4:16)

Abe & Liza Philip

VERSES 1,2

♩ = 83

A D E A E/G#

1. Un - cre - a - ted God,____
2. Joy Un - spea - ka - ble,____
Un - cre - a - ted Love,____
In - ex - pres - si - ble,____

5 F#m D Esus- E7 D/A A D/E

1. Fa - ther, Spi - rit, Son,____
2. God Most Won - der - ful,____
Ne - ver - en - ding One,____
Ne - ver - chan - ging One,____

9 A D E A E/G#

1. True and Beau - ti - ful,____
2. Sove-reign Ma - jes - ty,____
Just and Mer - ci - ful,____
In vin - ci - ble and Free,____

13 F#m D Esus- E7 A E/G#

1. God Un - sear - cha - ble,____
2. God who died for me,____
Ne - ver - fai - ling One,____
Ev - er - li - ving One,____

CHORUS

17 F#m A D A F#m A D

Ho - ly,____
Ho - ly,____
Ho - ly,____
God.

21 F#m A D A F#m Bm/D A

High and____
low - ly,____
King of____
Love.____

Uncreated God (King of Love)

Abe & Liza Philip

So we have come to know and to believe the love that God has for us.
God is love, and whoever abides in love abides in God, and God abides in him. (1 John 4:16)

VERSES 1,2

♩ = 83

B

E

F#

B

F#/A#



1. Un - cre - a - ted God,____

Un - cre - a - ted Love,____

2. Joy Un - spea - ka - ble,____

In - ex - pres - si - ble,____

5

G#m

E

F#sus-

F#7

E/B

B E/F#



1. Fa - ther, Spi - rit, Son,____

Ne - ver - en - ding One.____

2. God Most Won - der - ful,____

Ne - ver - chan - ging One.____

9

B

E

F#

B

F#/A#



1. True and Beau - ti - ful,

Just and Mer - ci - ful,____

2. Sove-reign Ma - jes - ty,

In vin - ci - ble and Free,____

13

G#m

E

F#sus-

F#7

B

F#/A#



1. God Un - sear - cha - ble,____

Ne - ver - fai - ling One.____

2. God who died for me,____

Ev - er - li - ving One.____

CHORUS

17

G#m

B

E

B

G#m

B



Ho - ly,____

Ho - ly,____

Ho - ly____

God.

20

E

G#m

B

E

B

G#m

C#m/E

B



High and_ low - ly____

King of_ Love.____

Uncreated God (King of Love)

So we have come to know and to believe the love that God has for us.
God is love, and whoever abides in love abides in God, and God abides in him. (1 John 4:16)

Abe & Liza Philip

VERSES 1,2

♩ = 83

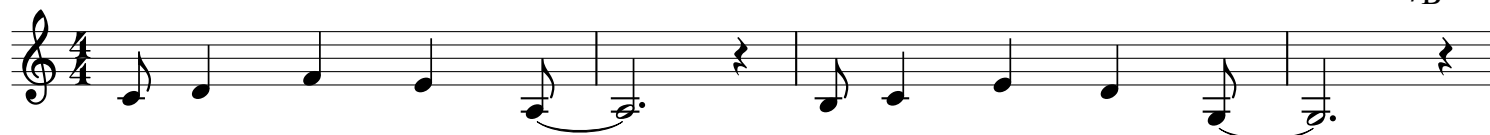
C

F

G

C

G/B



1. Un - cre - a - ted God, _____

Un - cre - a - ted Love, _____

2. Joy Un - spea - ka - ble, _____

In - ex - pres - si - ble, _____

5

Am

F

Gsus-

G7

F/C

C

F/G



1. Fa - ther, Spi - rit, Son, _____

Ne - ver - en - ding One. _____

2. God Most Won - der - ful, _____

Ne - ver - chan - ging One. _____

9

C

F

G

C

G/B



1. True and Beau - ti - ful, _____

Just and Mer - ci - ful, _____

2. Sove-reign Ma - jes - ty, _____

In vin - ci - ble and Free, _____

13

Am

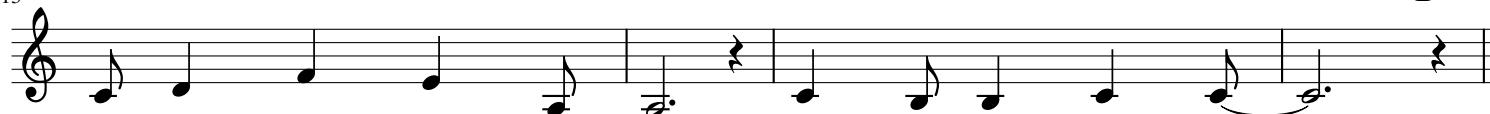
F

Gsus-

G7

C

G/B



1. God Un - sear - cha - ble, _____

Ne - ver - fai - ling One. _____

2. God who died for me, _____

Ev - er - li - ving One. _____

CHORUS

17

Am

C

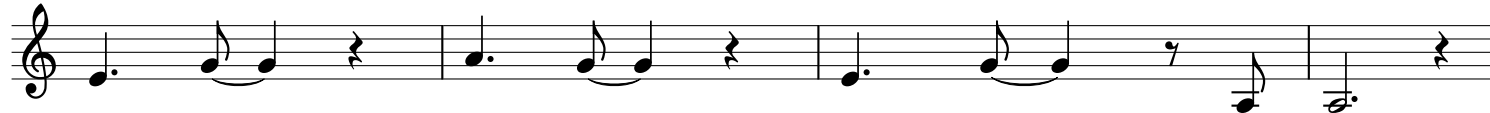
F

C

Am

C

F



Ho - ly, _____

Ho - ly, _____

Ho - ly _____

God.

21

Am

C

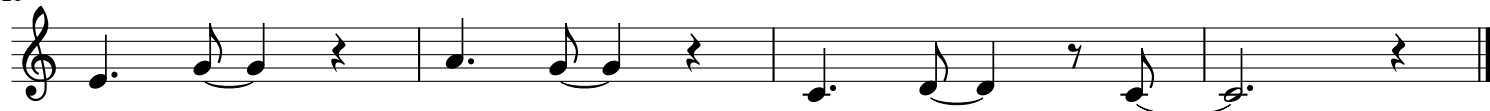
F

C

Am

Dm/F

C



High and _____

low - ly _____

King of _____

Love. _____

Uncreated God (King of Love)

So we have come to know and to believe the love that God has for us.
God is love, and whoever abides in love abides in God, and God abides in him. (1 John 4:16)

Abe & Liza Philip

VERSES 1,2

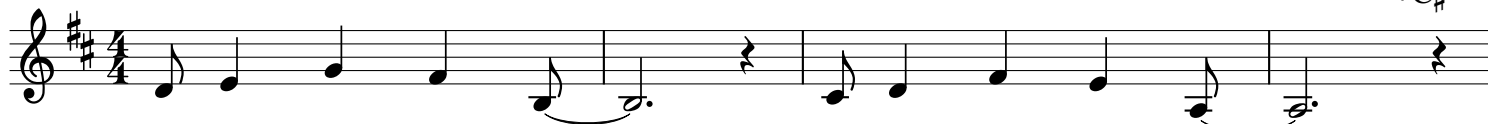
♩ = 83
D

G

A

D

A/C#



1. Un - cre - a - ted God,____
2. Joy Un - spea - ka - ble,____

Un - cre - a - ted Love,____
In - ex - pres - si - ble,____

5

Bm

G

Asus-

A7

G/D

D

G/A



1. Fa - ther, Spi - rit, Son,____
2. God Most Won - der - ful,____

Ne - ver - en - ding One.____
Ne - ver - chan - ging One.____

9

D

G

A

D

A/C#



1. True and Beau - ti - ful,
2. Sove-reign Ma - jes - ty,

Just and Mer - ci - ful,____
In vin - ci - ble and Free,____

13

Bm

G

Asus-

A7

D

A/C#



1. God Un - sear - cha - ble,____
2. God who died for me,____

Ne - ver - fai - ling One.____
Ev - er - li - ving One.____

CHORUS

17

Bm

D

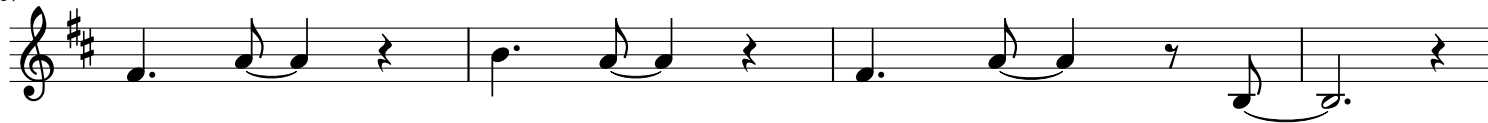
G

D

Bm

D

G



Ho - ly,____ Ho - ly,____ Ho - ly____ God.

21

Bm

D

G

D

Bm

Em/G

D



High and____ low - ly____ King of____ Love.____

Uncreated God (King of Love)

So we have come to know and to believe the love that God has for us.
God is love, and whoever abides in love abides in God, and God abides in him. (1 John 4:16)

Abe & Liza Philip

VERSES 1,2

♩ = 83

E♭

A♭

B♭

E♭

B♭/D



1. Un - cre - a - ted God, _____

Un - cre - a - ted Love, _____

2. Joy Un - spea - ka - ble, _____

In - ex - pres - si - ble, _____

5

Cm

A♭

B♭sus-

B♭7

A♭/E♭ E♭ A♭/B♭



1. Fa - ther, Spi - rit, Son, _____

Ne - ver - en - ding One. _____

2. God Most Won - der - ful, _____

Ne - ver - chan - ging One. _____

9

E♭

A♭

B♭

E♭

B♭/D



1. True and Beau - ti - ful,

Just and Mer - ci - ful, _____

2. Sove-reign Ma - jes - ty,

In vin - ci - ble and Free, _____

13

Cm

A♭

B♭sus-

B♭7

E♭

B♭/D



1. God Un - sear - cha - ble, _____

Ne - ver - fai - ling One. _____

2. God who died for me, _____

Ev - er - li - ving One. _____

CHORUS

17

Cm

E♭

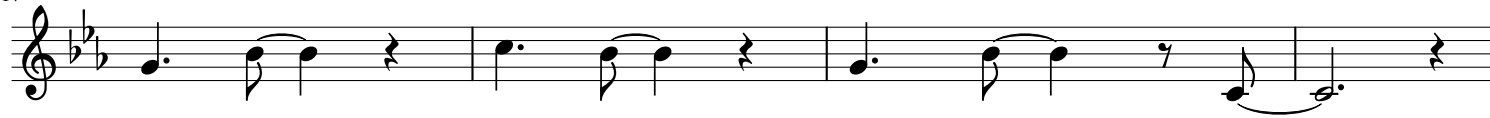
A♭

E♭

Cm

E♭

A♭



Ho - ly, _____

Ho - ly, _____

Ho - ly _____

God.

21

Cm

E♭

A♭

E♭

Cm

Fm/A♭

E♭



High and _____

low - ly _____

King of _____

Love. _____